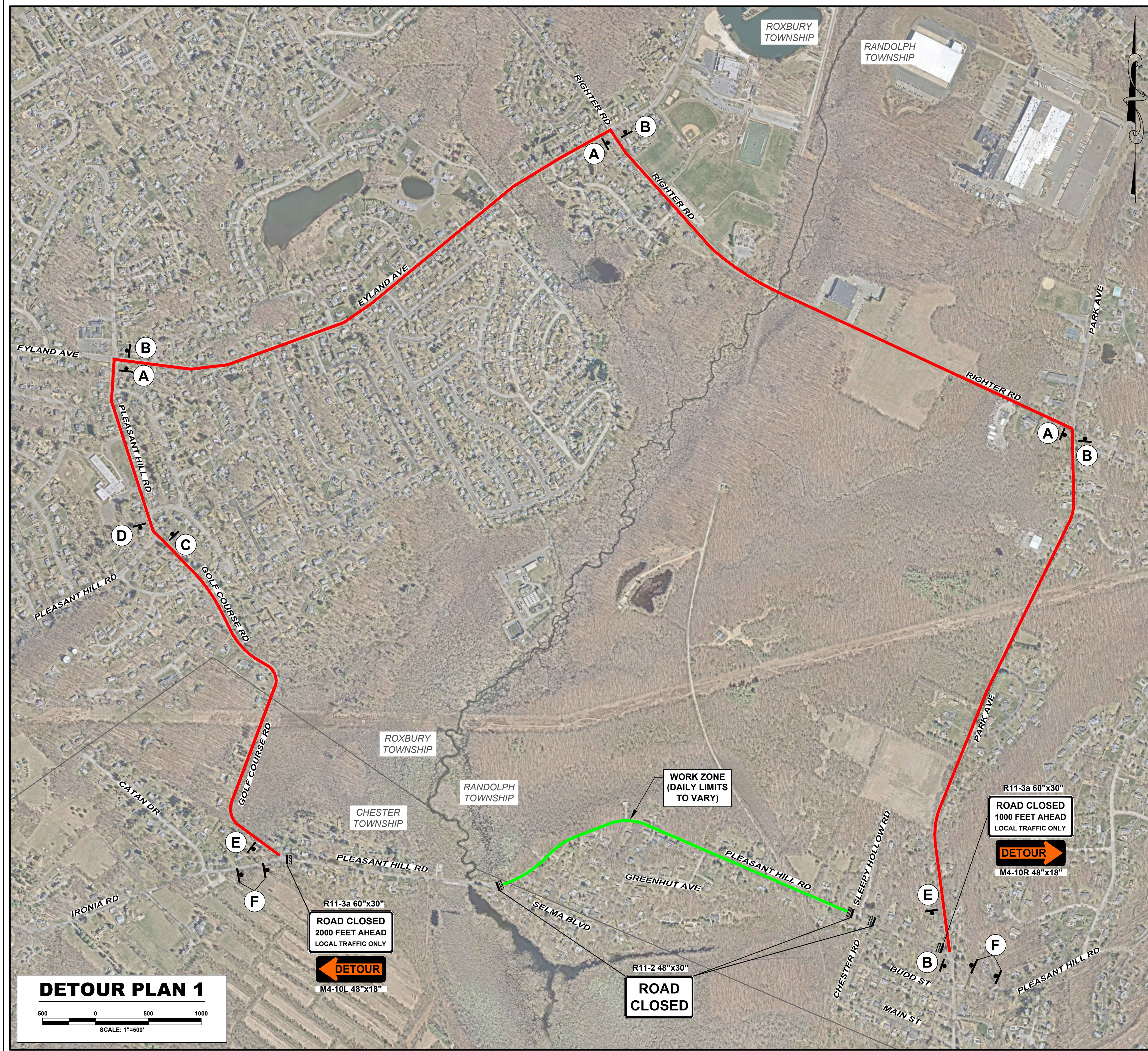
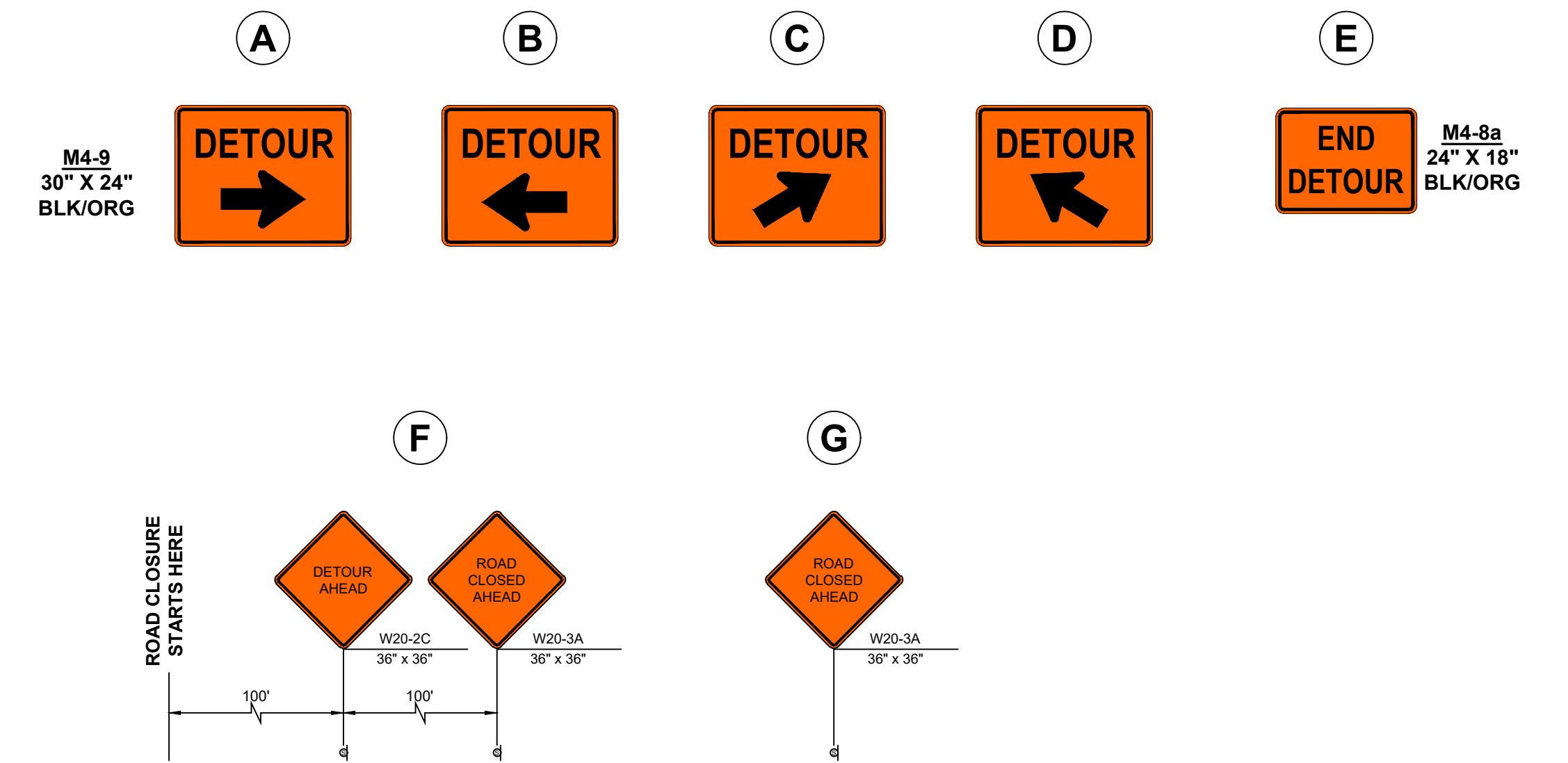


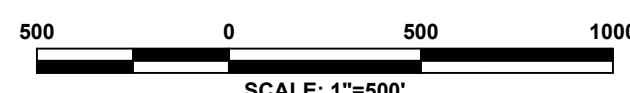
I:\projects\2025\25-CAD\WIP\PlanSet\PlanSet\Local Detour\Plan_1.dwg Thu, Jun 11, 2026 - 4:53pm bburke SUBURBAN CONSULTING ENGINEERS, INC.



SIGN LEGEND



DETOUR PLAN 1



NOTICE
THIS DRAWING AND ALL INFORMATION CONTAINED HEREIN IS AUTHORIZED FOR USE ONLY BY THE PARTY FOR WHOM THE WORK WAS CONTRACTED OR TO WHOM IT IS CERTIFIED.
THIS DRAWING MAY NOT BE COPIED, REPRODUCED, DISCLOSED, DISTRIBUTED, OR BELIED UPON FOR ANY OTHER PURPOSE WITHOUT THE WRITTEN CONSENT OF SUBURBAN CONSULTING ENGINEERS, INC.
FOR E-LEARNING SUBMISSIONS NOT CONTAINING A VALID DIGITAL SEAL OR PAPER COPIES NOT CONTAINING A RAISED SEAL ARE NOT ORIGINALS AND MAY HAVE BEEN ALTERED.

DESCRIPTION	NO.	DATE:	BY:	CHK:
REVISIONS				

DRAWN BY:
BPB
CHECKED BY:
CSS
CHECKED BY:
JAS

CHARLES S. SILVERSTEIN, PE
NJ PROFESSIONAL ENGINEER
LICENSE NO. 24GE03306200
DATE: 04/29/2026



SUBURBAN CONSULTING ENGINEERS, INC.

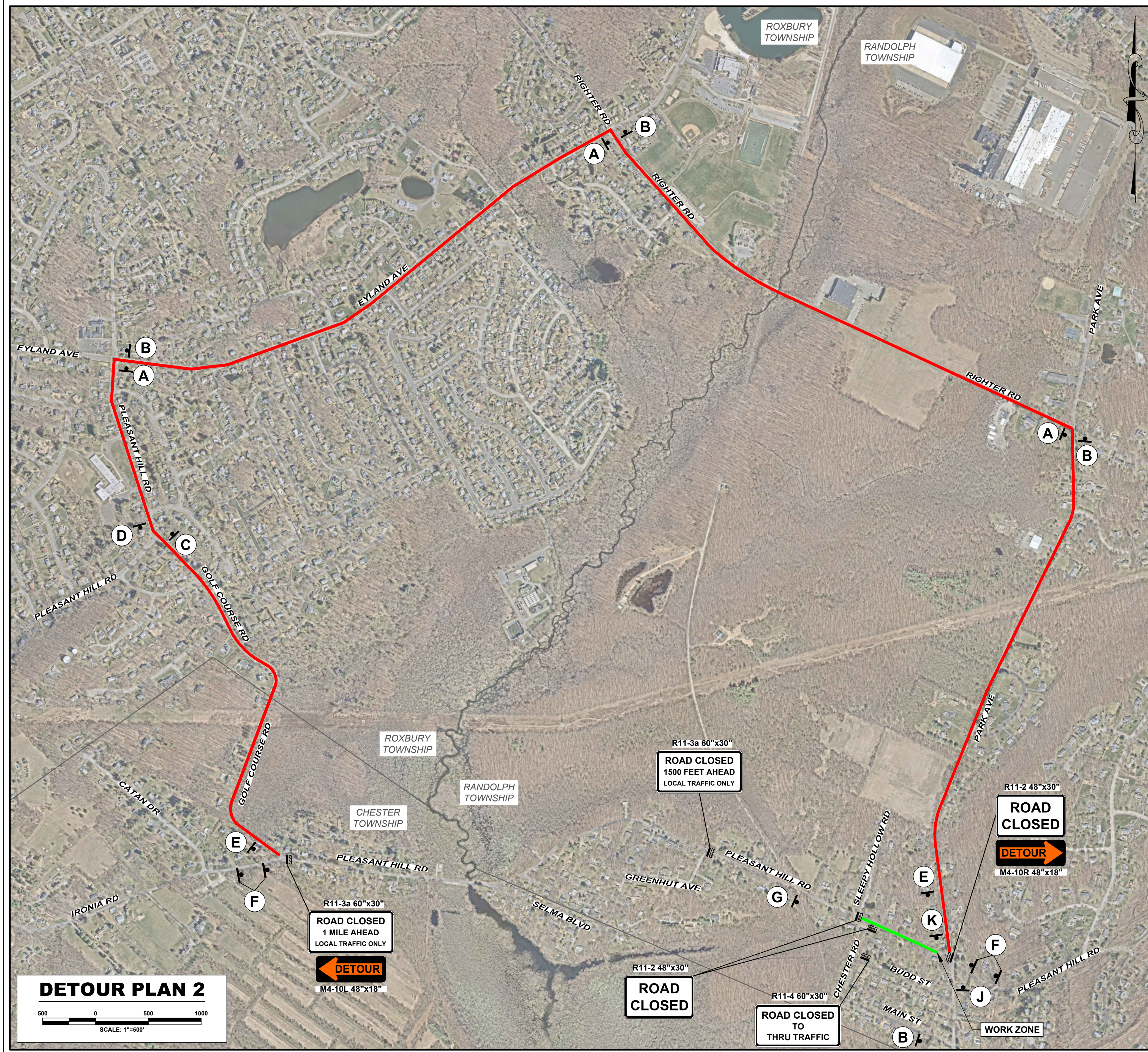
COA NO. 24CA128037501
2130110000924
- Civil Engineers - Municipal Engineers -
- Landscape Architects -
- Planners - Environmentalists - Land Surveyors -
96 US Highway 206, Suite 101 1350 Campus Parkway, Suite 104 505 Main Street, Suite 314
Haddonfield, NJ 07836 - 973.398.1776 Wall, NJ 07753 - 732.982.1776 Hackensack, NJ 07601 - 201.646.1776
EXCELLENCE ♦ ECONOMY ♦ ENVIRONMENT

MORRIS COUNTY MUNICIPAL UTILITIES AUTHORITY
PLEASANT HILL ROAD 24-INCH PCCP RETIREMENT - PHASE II
RANDOLPH TOWNSHIP, MORRIS COUNTY, NEW JERSEY

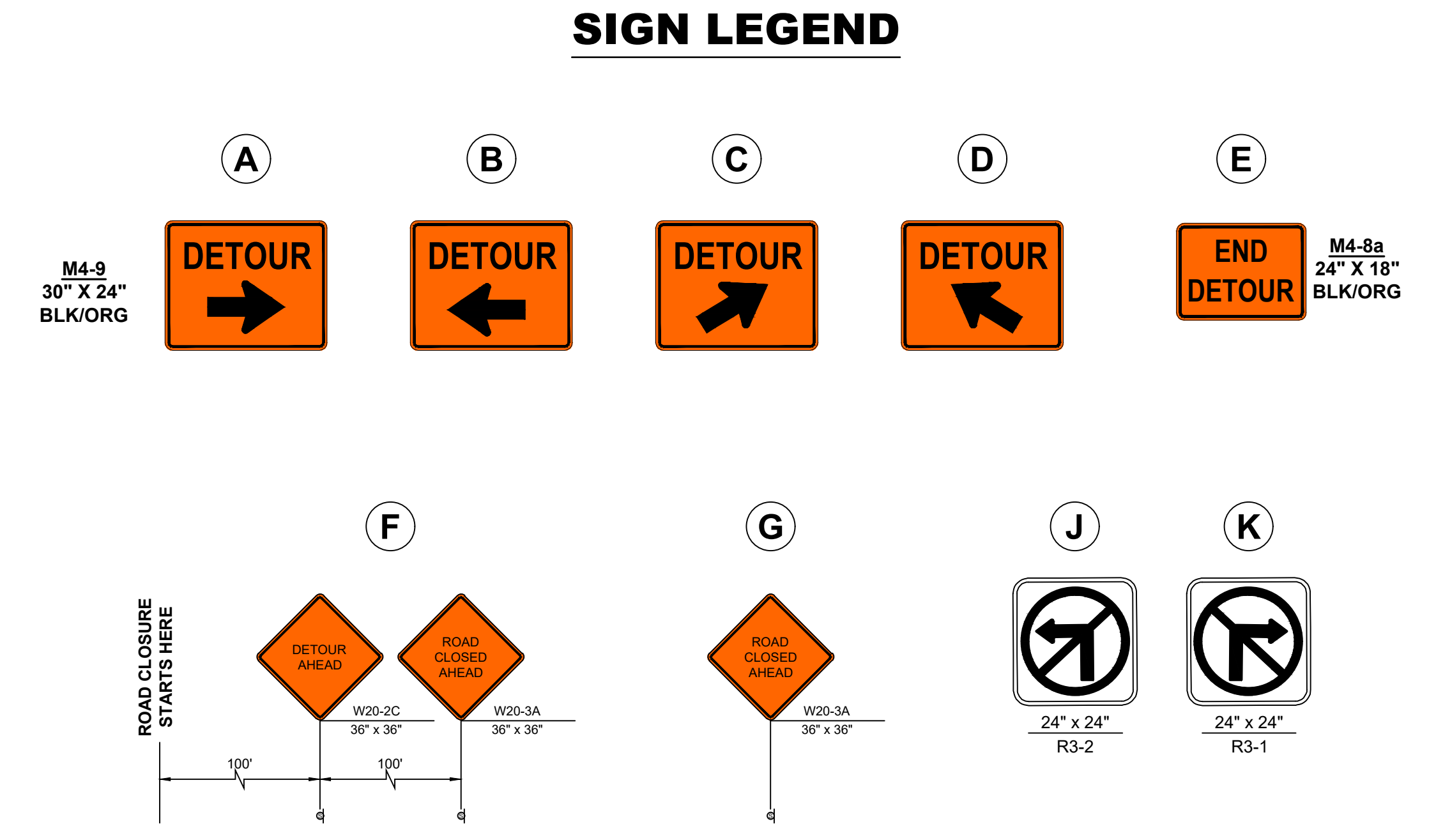
PLEASANT HILL RD. DETOUR PLAN 1

PROJECT NUMBER:
SCE-R08125-Y25
DRAWING NUMBER:
TC200
SHEET NUMBER:
1 OF 2
SCALE:
1" = 500'
REV.

I:\projects\municipal\Projects\808125-25\CAD\WIP\PlanSet\PlanSet\Plan_L.dwg Thu Jun 11 2026 4:53pm bburke SUBURBAN CONSULTING ENGINEERS, INC.



DETOUR PLAN 2
 500 0 500 1000
 SCALE: 1"=500'



NOTICE
 THIS DRAWING AND ALL INFORMATION CONTAINED HEREIN IS AUTHORIZED FOR USE ONLY BY THE PARTY FOR WHOM THE WORK WAS CONTRACTED OR TO WHOM IT IS CERTIFIED.
 THIS DRAWING MAY NOT BE COPIED, REPRODUCED, DISTRIBUTED, OR BELIED UPON FOR ANY OTHER PURPOSE WITHOUT THE WRITTEN CONSENT OF SUBURBAN CONSULTING ENGINEERS, INC.
 PER N.J.A.C. ELECTRONIC SUBMISSIONS NOT CONTAINING A VALID DIGITAL SEAL OR PAPER COPIES NOT CONTAINING A RAISED SEAL ARE NOT ORIGINALS AND MAY HAVE BEEN ALTERED.
 © COPYRIGHT 2026 SUBURBAN CONSULTING ENGINEERS, INC.™
 ALL RIGHTS RESERVED

DESCRIPTION	NO.	DATE:	BY:	CHK:
REVISIONS				

DRAWN BY:
BPB

CHECKED BY:
CSS

CHECKED BY:
JAS

CHARLES S. SILVERSTEIN, PE
 NJ PROFESSIONAL ENGINEER
 LICENSE NO. 24GE03306200
 DATE: 04/29/2026

SUBURBAN CONSULTING ENGINEERS, INC.
 COA NO. 24CE128037501
 210110008294

- Civil Engineers - Municipal Engineers -
 - Landscape Architects -
 - Planners - Environmentalists - Land Surveyors -

96 US Highway 206, Suite 101
 Hazlet, NJ 07836 - 973.398.1776

1350 Campus Parkway, Suite 104
 Wall, NJ 07753 - 732.982.1776

505 Main Street, Suite 314
 Hackensack, NJ 07601 - 201.646.1776

EXCELLENCE ♦ ECONOMY ♦ ENVIRONMENT

MORRIS COUNTY MUNICIPAL UTILITIES AUTHORITY
PLEASANT HILL ROAD 24-INCH PCCP RETIREMENT - PHASE II
RANDOLPH TOWNSHIP, MORRIS COUNTY, NEW JERSEY

PLEASANT HILL RD. DETOUR PLAN 2

PROJECT NUMBER:
SCE-R08125-Y25

DRAWING NUMBER:
TC210

SHEET NUMBER:
2 OF 2

SCALE:
AS NOTED

REV.